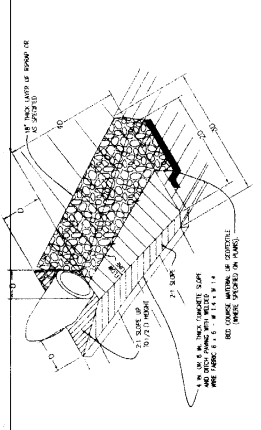


NOTE:
 DRY HYDRANT TO BE INSTALLED AND TESTED PER MANUFACTURER'S RECOMMENDATIONS.
 ALL RODS AND OTHER DEBRIS SHOULD BE REMOVED FROM THE PIPE TRENCH PRIOR TO INSTALLATION.
 SHOULD BE SHARED IN THE TRENCH TO ALLOW FOR EXPANSION AND CONTRACTION. THE
 ACCEPTABLE IF SOLVENT CEMENT METHODS USED. THE CONTRACTOR SHALL BE RESPONSIBLE FOR
 PRESSURE TESTING, AND PIPE MOVEMENT SHOULD NOT BE DONE UNTIL AFTER THE JOINTS
 HAVE BEEN GIVEN SUFFICIENT TIME TO CURE.



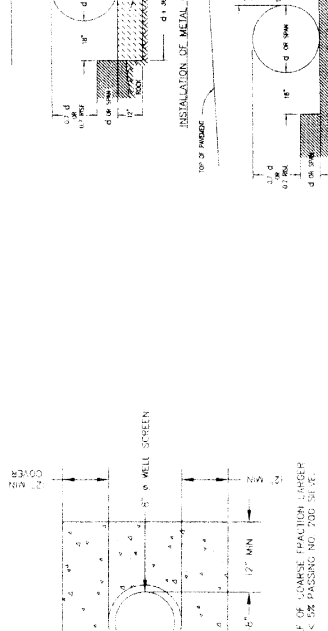
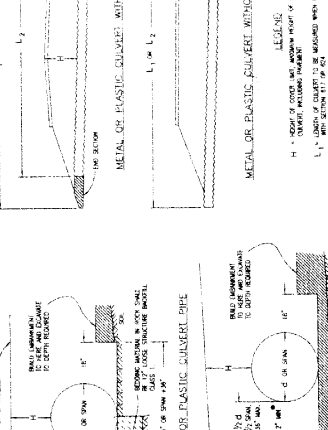
HEADWALLS AND STANDARD PLAN NO. M-601-12
 Sheet No. 1 of 1
 Issued By: Project Development Branch October 1, 2000

**2 2/3\"/>
 CORRUGATIONS**

PIPE HEIGHT (INCHES)	HEIGHT OF CORRUGATIONS (INCHES)	HEIGHT OF CORRUGATIONS (FEET)	WEIGHT (LBS)
15	74	6.17	100
18	61	5.08	94
21	55	4.58	88
24	48	4.00	82
27	41	3.42	76
30	34	2.83	70
33	27	2.25	64
36	20	1.67	58
39	13	1.08	52
42	6	0.50	46
45	0	0.00	40

- GENERAL NOTES:**
1. HEADWALL SHALL BE INSTALLED USING CONCRETE TO MATCH THE STRUCTURE FROM WHICH IT IS DERIVED.
 2. PIPE SHALL BE PLACED WITH LONGITUDINAL JOINTS IN THE SIDE OF QUARTER POINT BUT NOT IN THE END OF QUARTER POINT.
 3. JOINTS SHALL BE MADE UP WITH JOINT COMPOUND TO MATCH THE JOINTS ON THE OTHER SIDE OF THE QUARTER POINT.
 4. MAKE SURE TO BE CONFORMED WITH THE JOINTS ON THE OTHER SIDE OF THE QUARTER POINT.
 5. MAKE SURE TO BE CONFORMED WITH THE JOINTS ON THE OTHER SIDE OF THE QUARTER POINT.
 6. MAKE SURE TO BE CONFORMED WITH THE JOINTS ON THE OTHER SIDE OF THE QUARTER POINT.
 7. MAKE SURE TO BE CONFORMED WITH THE JOINTS ON THE OTHER SIDE OF THE QUARTER POINT.
 8. MAKE SURE TO BE CONFORMED WITH THE JOINTS ON THE OTHER SIDE OF THE QUARTER POINT.
 9. MAKE SURE TO BE CONFORMED WITH THE JOINTS ON THE OTHER SIDE OF THE QUARTER POINT.
 10. MAKE SURE TO BE CONFORMED WITH THE JOINTS ON THE OTHER SIDE OF THE QUARTER POINT.

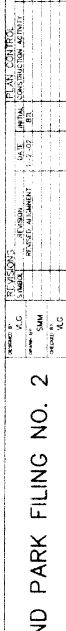
METAL AND PLASTIC STANDARD PLAN NO. M-603-1
 Sheet No. 1 of 2
 Issued By: Project Development Branch October 1, 2000



GENERAL NOTES:

1. HEADWALL SHALL BE INSTALLED USING CONCRETE TO MATCH THE STRUCTURE FROM WHICH IT IS DERIVED.
2. PIPE SHALL BE PLACED WITH LONGITUDINAL JOINTS IN THE SIDE OF QUARTER POINT BUT NOT IN THE END OF QUARTER POINT.
3. JOINTS SHALL BE MADE UP WITH JOINT COMPOUND TO MATCH THE JOINTS ON THE OTHER SIDE OF THE QUARTER POINT.
4. MAKE SURE TO BE CONFORMED WITH THE JOINTS ON THE OTHER SIDE OF THE QUARTER POINT.
5. MAKE SURE TO BE CONFORMED WITH THE JOINTS ON THE OTHER SIDE OF THE QUARTER POINT.
6. MAKE SURE TO BE CONFORMED WITH THE JOINTS ON THE OTHER SIDE OF THE QUARTER POINT.
7. MAKE SURE TO BE CONFORMED WITH THE JOINTS ON THE OTHER SIDE OF THE QUARTER POINT.
8. MAKE SURE TO BE CONFORMED WITH THE JOINTS ON THE OTHER SIDE OF THE QUARTER POINT.
9. MAKE SURE TO BE CONFORMED WITH THE JOINTS ON THE OTHER SIDE OF THE QUARTER POINT.
10. MAKE SURE TO BE CONFORMED WITH THE JOINTS ON THE OTHER SIDE OF THE QUARTER POINT.

METAL AND PLASTIC STANDARD PLAN NO. M-603-1
 Sheet No. 2 of 2
 Issued By: Project Development Branch October 1, 2000



GENERAL NOTES:

1. HEADWALL SHALL BE INSTALLED USING CONCRETE TO MATCH THE STRUCTURE FROM WHICH IT IS DERIVED.
2. PIPE SHALL BE PLACED WITH LONGITUDINAL JOINTS IN THE SIDE OF QUARTER POINT BUT NOT IN THE END OF QUARTER POINT.
3. JOINTS SHALL BE MADE UP WITH JOINT COMPOUND TO MATCH THE JOINTS ON THE OTHER SIDE OF THE QUARTER POINT.
4. MAKE SURE TO BE CONFORMED WITH THE JOINTS ON THE OTHER SIDE OF THE QUARTER POINT.
5. MAKE SURE TO BE CONFORMED WITH THE JOINTS ON THE OTHER SIDE OF THE QUARTER POINT.
6. MAKE SURE TO BE CONFORMED WITH THE JOINTS ON THE OTHER SIDE OF THE QUARTER POINT.
7. MAKE SURE TO BE CONFORMED WITH THE JOINTS ON THE OTHER SIDE OF THE QUARTER POINT.
8. MAKE SURE TO BE CONFORMED WITH THE JOINTS ON THE OTHER SIDE OF THE QUARTER POINT.
9. MAKE SURE TO BE CONFORMED WITH THE JOINTS ON THE OTHER SIDE OF THE QUARTER POINT.
10. MAKE SURE TO BE CONFORMED WITH THE JOINTS ON THE OTHER SIDE OF THE QUARTER POINT.